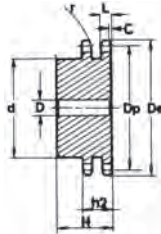
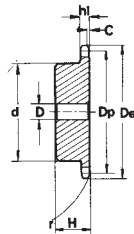


Pignoni temperati ad induzione sui denti (45 ÷ 55 HRC)
Sprockets with hardened teeth (45 ÷ 55 HRC)
Kettenräder mit ind. gehärteter Verzahnung (45 ÷ 55 HRC)
Pignons avec denture trempee haute frequence (45 ÷ 55 HRC)
Piñones templados por inducción en los dientes (45 ÷ 55 HRC)



PIÑONES		ISO mm	
Radio diente r	r	16,0	
Ancho radio C	C	1,6	
Ancho diente h ₁	h ₁	9,1	
Ancho diente L	L	9,0	
Ancho diente h ₂	h ₂	25,5	

Materiale C45E
UNI EN 10083-1

Material C45E
UNI EN 10083-1

Werkstoff C45E
UNI EN 10083-1

Matière C45E
UNI EN 10083-1

Material C45E
UNI EN 10083-1

PIÑONES		ISO mm	
Radio diente r	r	19,0	
Ancho radio C	C	2,0	
Ancho diente h ₁	h ₁	11,1	
Ancho diente L	L	10,8	
Ancho diente h ₂	h ₂	30,3	

5/8" x 3/8" 10B - 1 - 2 15,875 x 9,65 mm

Z	D _e	D _p	Simplex			Duplex				
			cod.	d	D	H	cod.	d	D	H
8	47,0	41,48	20052008TI	25	10	25	22052008TI	25	12	40
9	52,6	46,42	20052009TI	30	10	25	22052009TI	30	12	40
10	57,5	51,37	20052010TI	35	10	25	22052010TI	35	12	40
11	63,0	56,34	20052011TI	37	12	30	22052011TI	39	14	40
12	68,0	61,34	20052012TI	42	12	30	22052012TI	44	14	40
13	73,0	66,32	20052013TI	47	12	30	22052013TI	49	14	40
14	78,0	71,34	20052014TI	52	12	30	22052014TI	54	14	40
15	83,0	76,36	20052015TI	57	12	30	22052015TI	59	14	40
16	88,0	81,37	20052016TI	60	12	30	22052016TI	64	16	45
17	93,0	86,39	20052017TI	60	12	30	22052017TI	69	16	45
18	98,0	91,42	20052018TI	70	14	30	22052018TI	74	16	45
19	103,3	96,45	20052019TI	70	14	30	22052019TI	79	16	45
20	108,4	101,49	20052020TI	75	14	30	22052020TI	84	16	45
21	113,4	106,52	20052021TI	75	16	30	22052021TI	85	16	45
22	118,0	111,55	20052022TI	80	16	30	22052022TI	90	16	45
23	123,4	116,58	20052023TI	80	16	30	22052023TI	95	16	45
24	128,3	121,62	20052024TI	80	16	30	22052024TI	100	16	45
25	134,0	126,66	20052025TI	80	16	30	22052025TI	105	16	45
26	139,0	131,70	20052026TI	85	20	35	22052026TI	110	20	45
27	144,0	136,75	20052027TI	85	20	35	22052027TI	110	20	45
28	148,7	141,78	20052028TI	90	20	35	22052028TI	115	20	45
30	158,8	151,87	20052030TI	90	20	35	22052030TI	120	20	45
32	168,9	161,95	20052032TI	95	20	35	22052032TI	120	20	45
34	179,0	172,05	20052034TI	95	20	35	22052034TI	120	20	45
35	184,1	177,10	20052035TI	95	20	35	22052035TI	120	20	45
36	189,1	182,15	20052036TI	100	20	35	22052036TI	120	20	45
38	199,2	192,24	20052038TI	100	20	35	22052038TI	120	20	45
40	209,3	202,34	20052040TI	100	20	40	22052040TI	120	20	45

3/4" x 7/16" 12B - 1 - 2 19,05 x 11,68 mm

Z	D _e	D _p	Simplex			Duplex				
			cod.	d	D	H	cod.	d	D	H
8	57,6	49,78	20062008TI	31	12	30	22062008TI	31	12	45
9	62,0	55,70	20062009TI	37	12	30	22062009TI	37	12	45
10	69,0	61,64	20062010TI	42	12	30	22062010TI	42	12	45
11	75,0	67,61	20062011TI	46	14	35	22062011TI	47	16	50
12	81,5	73,60	20062012TI	52	14	35	22062012TI	53	16	50
13	87,5	79,59	20062013TI	58	14	35	22062013TI	59	16	50
14	93,6	85,61	20062014TI	64	14	35	22062014TI	65	16	50
15	99,8	91,63	20062015TI	70	14	35	22062015TI	71	16	50
16	105,5	97,65	20062016TI	75	16	35	22062016TI	77	20	50
17	111,5	103,67	20062017TI	80	16	35	22062017TI	83	20	50
18	118,0	109,71	20062018TI	80	16	35	22062018TI	89	20	50
19	124,2	115,75	20062019TI	80	16	35	22062019TI	95	20	50
20	129,7	121,78	20062020TI	80	16	35	22062020TI	100	20	50
21	136,0	127,82	20062021TI	90	20	40	22062021TI	100	20	50
22	141,8	133,86	20062022TI	90	20	40	22062022TI	100	20	50
23	149,0	139,90	20062023TI	90	20	40	22062023TI	100	20	50
24	153,9	145,94	20062024TI	90	20	40	22062024TI	100	20	50
25	160,0	152,00	20062025TI	90	20	40	22062025TI	120	20	50
26	165,9	158,04	20062026TI	95	20	40	22062026TI	120	20	50
27	172,3	164,09	20062027TI	95	20	40	22062027TI	120	20	50
28	178,0	170,13	20062028TI	95	20	40	22062028TI	120	20	50
30	190,5	182,25	20062030TI	95	20	40	22062030TI	120	20	50
32	203,3	194,35	20062032TI	100	20	40	22062032TI	130	20	50
34	214,6	206,46	20062034TI	100	20	40	22062034TI	130	20	50
35	221,0	212,52	20062035TI	100	20	40	22062035TI	130	20	50
36	226,8	218,58	20062036TI	100	20	40	22062036TI	130	25	50
38	239,0	230,69	20062038TI	100	20	40	22062038TI	130	25	50
40	251,3	242,81	20062040TI	100	20	40	22062040TI	130	25	50