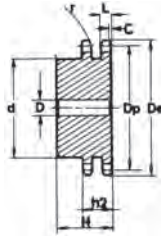
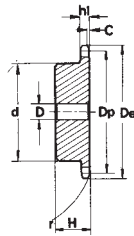




**Pignoni temperati ad induzione sui denti (45 ÷ 55 HRC)**  
**Sprockets with hardened teeth (45 ÷ 55 HRC)**  
**Kettenräder mit ind. gehärteter Verzahnung (45 ÷ 55 HRC)**  
**Pignons avec denture trempee haute frequence (45 ÷ 55 HRC)**  
**Piñones templados por inducción en los dientes (45 ÷ 55 HRC)**



PIÑONES	ISO mm
Radio diente r	r 10,0
Ancho radio C	C 1,0
Ancho diente h <sub>1</sub>	h <sub>1</sub> 5,3
Ancho diente L	L 5,2
Ancho diente h <sub>2</sub>	h <sub>2</sub> 15,4

Materiale C45E  
UNI EN 10083-1

Material C45E  
UNI EN 10083-1

Werkstoff C45E  
UNI EN 10083-1

Matière C45E  
UNI EN 10083-1

Material C45E  
UNI EN 10083-1

PIÑONES	ISO mm
Radio diente r	r 13,0
Ancho radio C	C 1,3
Ancho diente h <sub>1</sub>	h <sub>1</sub> 7,2
Ancho diente L	L 7,0
Ancho diente h <sub>2</sub>	h <sub>2</sub> 21,0

**3/8" x 7/32" 06B - 1 - 2 9,525 x 5,72 mm**

**1/2" x 5/16" 08B - 1 - 2 12,7 x 7,75 mm**

Z	D <sub>e</sub>	D <sub>p</sub>	Simplex			Duplex				
			cod.	d	D	H	cod.	d	D	H
8	28,0	24,89	20032008TI	15	8	22	22032008TI	15	6	22
9	31,0	27,85	20032009TI	18	8	22	22032009TI	18	8	22
10	34,0	30,82	20032010TI	20	8	22	22032010TI	20	8	22
11	37,0	33,80	20032011TI	22	8	25	22032011TI	22	10	25
12	40,0	36,80	20032012TI	25	8	25	22032012TI	25	10	25
13	43,0	39,80	20032013TI	28	10	25	22032013TI	28	10	25
14	46,3	42,80	20032014TI	31	10	25	22032014TI	31	10	25
15	49,5	45,81	20032015TI	34	10	25	22032015TI	34	10	25
16	52,3	48,82	20032016TI	37	10	28	22032016TI	37	12	30
17	55,3	51,83	20032017TI	40	10	28	22032017TI	40	12	30
18	58,3	54,85	20032018TI	43	10	28	22032018TI	43	12	30
19	61,3	57,87	20032019TI	45	10	28	22032019TI	46	12	30
20	64,3	60,89	20032020TI	46	10	28	22032020TI	49	12	30
21	68,0	63,91	20032021TI	48	12	28	22032021TI	52	12	30
22	71,0	66,93	20032022TI	50	12	28	22032022TI	55	12	30
23	73,5	69,95	20032023TI	52	12	28	22032023TI	58	12	30
24	77,0	72,97	20032024TI	54	12	28	22032024TI	61	12	30
25	80,0	76,00	20032025TI	57	12	28	22032025TI	64	12	30
26	83,0	79,02	20032026TI	60	12	28	22032026TI	67	12	30
27	86,0	82,04	20032027TI	60	12	28	22032027TI	70	12	30
28	89,0	85,07	20032028TI	60	12	28	22032028TI	73	12	30
30	94,7	91,12	20032030TI	60	12	30	22032030TI	79	12	30
32	101,3	97,17	20032032TI	65	14	30	22032032TI	80	16	30
34	107,3	103,23	20032034TI	65	14	30	22032034TI	80	16	30
35	110,4	106,26	20032035TI	65	14	30	22032035TI	80	16	30
36	113,4	109,29	20032036TI	70	16	30	22032036TI	90	16	30
38	119,5	115,34	20032038TI	70	16	30	22032038TI	90	16	30
40	125,5	121,40	20032040TI	70	16	30	22032040TI	90	16	30

Z	D <sub>e</sub>	D <sub>p</sub>	Simplex			Duplex				
			cod.	d	D	H	cod.	d	D	H
8	37,2	33,18	20042008TI	20	10	25	22042008TI	20	10	32
9	41,0	37,13	20042009TI	24	10	25	22042009TI	24	10	32
10	45,2	41,10	20042010TI	26	10	25	22042010TI	28	10	32
11	48,7	45,07	20042011TI	29	10	25	22042011TI	32	12	35
12	53,0	49,07	20042012TI	33	10	28	22042012TI	35	12	35
13	57,4	53,06	20042013TI	37	10	28	22042013TI	38	12	35
14	61,8	57,07	20042014TI	41	10	28	22042014TI	42	12	35
15	65,5	61,09	20042015TI	45	10	28	22042015TI	46	12	35
16	69,5	65,10	20042016TI	50	12	28	22042016TI	50	14	35
17	73,6	69,11	20042017TI	52	12	28	22042017TI	54	14	35
18	77,8	73,14	20042018TI	56	12	28	22042018TI	58	14	35
19	81,7	77,16	20042019TI	60	12	28	22042019TI	62	14	35
20	85,8	81,19	20042020TI	64	12	28	22042020TI	66	14	35
21	89,7	85,22	20042021TI	68	12	28	22042021TI	70	16	40
22	93,8	89,24	20042022TI	70	12	28	22042022TI	70	16	40
23	98,2	93,27	20042023TI	70	14	28	22042023TI	70	16	40
24	101,8	97,29	20042024TI	70	14	28	22042024TI	75	16	40
25	105,8	101,33	20042025TI	70	14	28	22042025TI	80	16	40
26	110,0	105,36	20042026TI	70	16	30	22042026TI	85	20	40
27	114,0	109,40	20042027TI	70	16	30	22042027TI	85	20	40
28	118,0	113,42	20042028TI	70	16	30	22042028TI	90	20	40
30	126,1	121,50	20042030TI	80	16	30	22042030TI	100	20	40
32	134,3	129,56	20042032TI	90	16	30	22042032TI	100	20	40
34	142,6	137,64	20042034TI	90	16	30	22042034TI	100	20	40
35	146,7	141,68	20042035TI	90	16	30	22042035TI	100	20	40
36	151,0	145,72	20042036TI	90	16	35	22042036TI	110	20	40
38	158,6	153,80	20042038TI	90	16	35	22042038TI	110	20	40
40	166,8	161,87	20042040TI	90	16	35	22042040TI	110	20	40