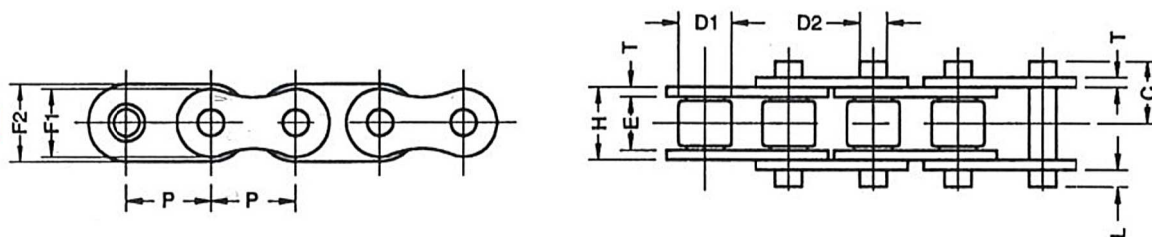




Cadena SNAP-ON

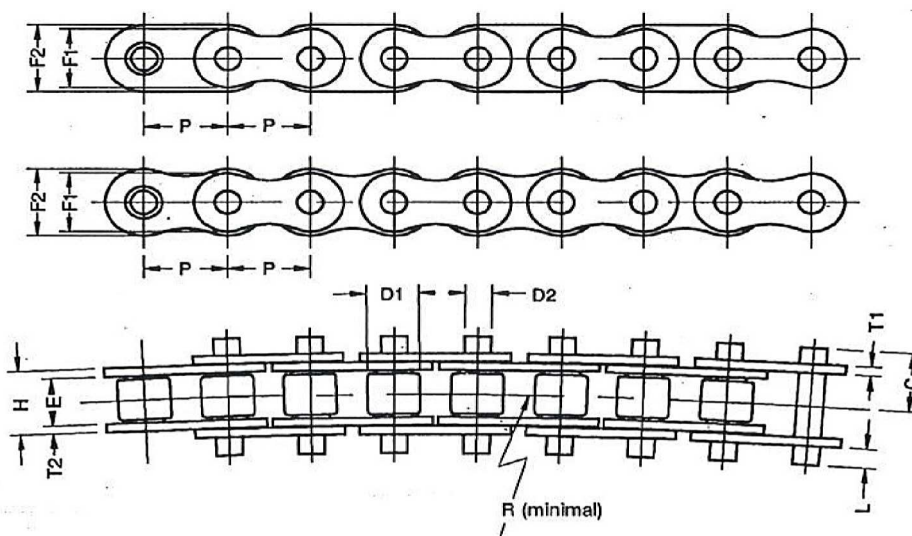
SNAP-ON



Chain No.	Pitch x Width		Roller	Pin			Links				Avg. Ulti. Tensile Strength kgf	Approx Weight kg/m
	P x E		D1	C	D2	L	T	H	F1	F2		
	inch	mm	mm	mm	mm	mm	mm	mm	mm	mm		
43	1/2 x 5/16	12.70 x 7.92	7.92	8.96	3.97	1.80	1.49	11.17	10.41	12.06	1800	0.65
43 NP	1/2 x 5/16	12.70 x 7.92	7.92	8.96	3.97	1.80	1.49	11.17	10.41	12.06	1800	0.65
43 SS	1/2 x 5/16	12.70 x 7.92	7.92	8.96	3.97	1.80	1.49	11.17	10.41	12.06	1440	0.65
63	3/4 x 1/2	19.05 x 12.70	11.91	14.13	5.95	3.80	2.38	17.75	15.64	18.09	4200	1.52
63 NP	3/4 x 1/2	19.05 x 12.70	11.91	14.13	5.95	3.80	2.38	17.75	15.64	18.09	4200	1.52
63 SS	3/4 x 1/2	19.05 x 12.70	11.91	14.13	5.95	3.80	2.38	17.75	15.64	18.09	2650	1.52

SNAP-ON 63 SB
GIRO LATERAL

43 SB



Chain No.	Pitch x Width		Roller	Pin			Links					Avg Ulti. Tensile Strength kgf	Approx Weight kg /m	
	P x E		D1	C	D2	L	T1	T2	H	F1	F2			R
	inch	mm	mm	mm	mm	mm	mm	mm	mm	mm	mm			mm
43SB	1/2 x 5/16	12.70 x 7.92	7.92	9.26	3.45	1.80	1.49	1.49	11.17	10.41	12.06	305	1250	0.60
43SB NP	1/2 x 5/16	12.70 x 7.92	7.92	9.26	3.45	1.80	1.49	1.49	11.17	10.41	12.06	305	1250	0.60
43SB SS	1/2 x 5/16	12.70 x 7.92	7.92	9.26	3.45	1.80	1.49	1.49	11.17	10.41	12.06	305	1050	0.60
63SB	3/4 x 1/2	19.05 x 12.70	11.91	14.52	5.09	3.20	2.01	2.38	17.75	15.64	18.09	356	2600	1.40
63SB NP	3/4 x 1/2	19.05 x 12.70	11.91	14.52	5.09	3.20	2.01	2.38	17.75	15.64	18.09	356	2600	1.40
63SB-SS	3/4 x 1/2	19.05 x 12.70	11.91	14.52	5.09	3.20	2.01	2.38	17.75	15.64	18.09	356	2200	1.40