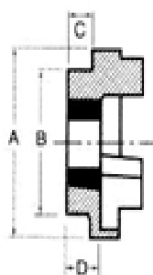
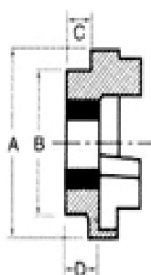


Tipo HRC

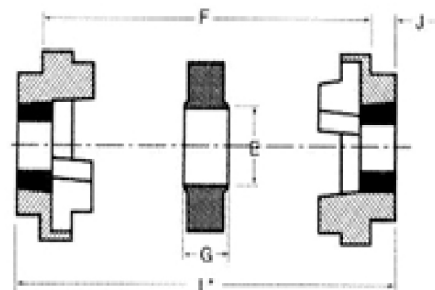
TIPO HRC



F CUBO



H CUBO



DIMENSIONES Y CARACTERISTICAS

REF. / CODE	TIPO	MONTAJE	A	B	E	F	G	TAPER	EJE		C	D	J
									mm	inch			
8000070F	70	F	69	60	31	25,0	18,0	1008	25	1	20,0	23,75	29
8000070	70	H	69	60	31	25,0	18,0	1008	25	1	20,0	23,75	29
8000090F	90	F	85	70	32	30,5	22,5	1108	28	1 1/8	19,5	23,25	29
8000090	90	H	85	70	32	30,5	22,5	1108	28	1 1/8	19,5	23,25	29
8000110F	110	F	112	100	45	45,0	29,0	1210	42	1 5/8	18,5	26,75	38
8000110	110	H	112	100	45	45,0	29,0	1210	42	1 5/8	18,5	26,75	38
	130	F	130	105	50	53,0	36,0	1610	42	1 5/8	18,0	26,50	38
8000130	130	H	130	105	50	53,0	36,0	1610	42	1 5/8	18,0	26,50	38
8000150F	150	F	150	115	62	60,0	40,0	2012	50	2	23,5	33,50	38
8000150	150	H	150	115	62	60,0	40,0	2012	50	2	23,5	33,50	38
8000180F	180	F	180	125	77	73,0	49,0	2517	60	2 1/2	34,5	46,50	38
8000180	180	H	180	125	77	73,0	49,0	2517	60	2 1/2	34,5	46,50	38
8000230F	230	F	225	155	99	85,5	59,5	3020	75	3	39,5	52,50	38
8000230	230	H	225	155	99	85,5	59,5	3020	75	3	39,5	52,50	38
8000280F	280	F	275	185	119	105,5	74,5	3535	90	3 1/2	74,0	90,00	38
8000280	280	H	275	185	119	105,5	74,5	3535	90	3 1/2	74,0	90,00	38

REF. / CODE	TIPO	LARGO TOTAL (L*) FF, FH, HH	MASA KG	INERCIA Mr ² Kgm	Dynamic Stiffness Nm/*	MAXIMO ESTIRAMIENTO		Nominal torque Nm
						Paralelo	Axial	
8000070C	70	65,0	1,00	0,00085	-	0,3	+0,2	31,0
8000090C	90	69,5	1,17	0,00115	-	0,3	+0,5	80
8000110C	110	82,0	5,00	0,00400	65	0,3	+0,6	160
8000130C	130	89,0	5,46	0,00780	130	0,4	+0,8	315
	150	107,0	7,11	0,01810	175	0,4	+0,9	600
8000180C	180	142,0	16,60	0,04340	229	0,4	+1,1	950
	230	164,5	26,00	0,12068	587	0,5	+1,3	2000
	280	207,5	55,30	0,44653	1025	0,5	+1,7	3150