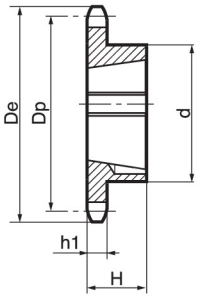
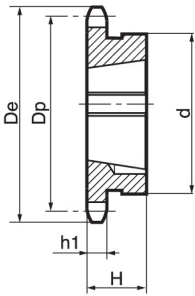




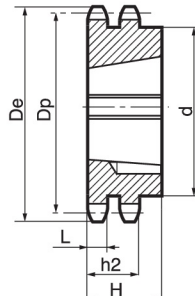
Versione (*) / Type (*)
Typ (*) / Tipo (*)



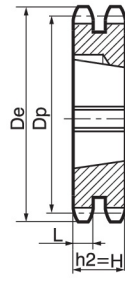
①



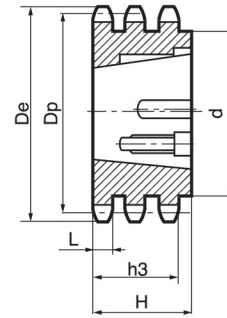
②



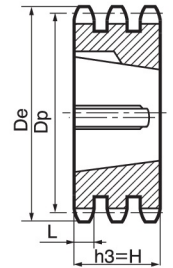
③



④



⑤



5/8" x 3/8" - 15,875 x 9,65 mm

10B - 1-2-3 - DIN 8187 - ISO/R 606

CATENA:	CHAIN:	KETTE:	CHAÎNE:	CADENA:	ISO mm
Passo	Pitch	Teilung	Pas	Paso	15,875
Larghezza interna	Internal width	Innere Breite	Largeur interieure	Ancho interno	9,650
Rullo ø	Roller ø	Rollen ø	ø du rouleau	Rodillo ø	10,160

PIGNONE	SPROCKETS	KETTENRÄDER	PIGNONS	PIÑONES	ISO mm
Raggio dente r	Tooth radius r	Radius r	Rayon de denture r	Radio diente r	r 16,0
Larghezza raggio C	Radius width C	Breite C	Largeur de rayon C	Ancho radio C	C 1,6
Largh. dente h ₁	Tooth width h ₁	Zahnbreite h ₁	Larg. de denture h ₁	Ancho diente h ₁	h₁ 9,1
Largh. dente L	Tooth width L	Zahnbreite L	Larg. de denture L	Ancho diente L	L 9,0
Largh. dente h ₂	Tooth width h ₂	Zahnbreite h ₂	Larg. de denture h ₂	Ancho diente h ₂	h₂ 25,5
Largh. dente h ₃	Tooth width h ₃	Zahnbreite h ₃	Larg. de denture h ₃	Ancho diente h ₃	h₃ 42,1

Acciaio **Steel** **Stahl** **Acier** **Acero = C45E - UNI EN 10083-1**

Z	D _e	D _p	Simplex				Duplex				Triplex							
			cod.	d	H	per Bussola for Bush für Buchse pour Moyeux amovibles para Casquillos cónicos	Esecuz. tipo Type Typ Type Tpo	cod.	d	H	per Bussola for Bush für Buchse pour Moyeux amovibles para Casquillos cónicos	Esecuz. tipo Type Typ Type Tpo	cod.	d	H	per Bussola for Bush für Buchse pour Moyeux amovibles para Casquillos cónicos	Esecuz. tipo Type Typ Type Tpo	
13	73,0	66,32	20052013T	47	22	1008	1	22052013T	-	25,5	1108	3						
14	78,0	71,34	20052014T	52	22	1108	1											
15	83,0	76,36	20052015T	60	25	1210	1	22052015T	-	25,5	1210	3	23052015T	-	42,1	1210	5	
16	88,0	81,37	20052016T	70*	25	1610	1											
17	93,0	86,36	20052017T	71*	25	1610	1	22052017T	-	25,5	1610	3	23052017T	-	42,1	1210	5	
18	98,3	91,42	20052018T	75	25	1610	1											
19	103,3	96,45	20052019T	75	25	1610	1	22052019T	-	25,5	1610	3	23052019T	-	42,1	1615	5	
20	108,4	101,49	20052020T	75	25	1610	1	22052020T	-	25,5	1610	3						
21	113,4	106,52	20052021T	76	25	1610	1	22052021T	-	25,5	1610	3	23052021T	-	42,1	1615	5	
22	118,0	111,55	20052022T	76	25	1610	1	22052022T	-	25,5	1610	3						
23	123,4	116,58	20052023T	76	25	1610	1	22052023T	-	25,5	1610	3	23052023T	-	42,1	2012	5	
24	128,3	121,62	20052024T	90	32	2012	1											
25	134,0	126,66	20052025T	90	32	2012	1	22052025T	90	32,0	2012	2	23052025T	105	45,0	2517	4	
26	139,0	131,70	20052026T	90	32	2012	1											
27	144,0	136,75	20052027T	90	32	2012	1	22052027T	90	32,0	2012	2		110	45,0	2517	4	
28	148,7	141,78	20052028T	90	32	2012	1											
30	158,8	151,87	20052030T	90	32	2012	1	22052030T	90	32,0	2012	2	23052030T	120	45,0	2517	4	
38	199,2	192,24	20052038T	100	32	2012	1	22052038T	108	45,0	2517	2						
45	235,0	227,58	20052045T	100	32	2012	1											
57	296,0	288,18	20052057T	100	32	2012	1											
76	392,1	384,16	20052076T	100	32	2012	1											
95	488,5	480,14	20052095T	110	45	2517	1											
114	584,1	576,13	20052114T	110	45	2517	1											